

# Galea™ Life

Design and Technology  
with a Human Touch



THE NEW RANGE OF WIRING ACCESSORIES

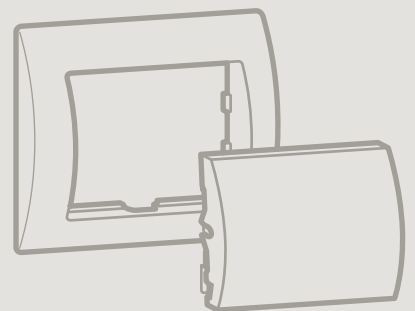
 **legrand**®

# Galea™ Life: new design, pro

Galea™ Life, the new range of wiring accessories by Legrand: modern but timeless, and offering a variety of attractive materials and colours to suit every customer wish.



Minimal storage space for maximum choice:  
5 rockers x 18 frameplates  
= endless possibilities.



# ven technology

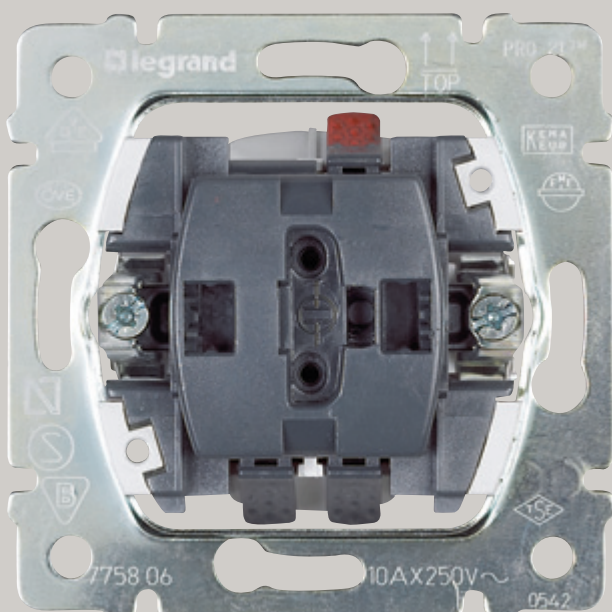


Design  
Award  
Winner  
2000

Behind the attractive exterior of Galea™ Life we find the renowned PRO 21 mechanism,

which was awarded the IF Design Prize.

Offer your customers a brand-new range while ensuring familiar installation quality standards.



Not just pretty, but smart!



But of course there is more to life than just design. This is why

Legrand's new wiring accessory range offers a new answer to growing demands for comfort, safety and communication. Find out more on page 16.

## Contents

4-13

Galea™ Life design

14-15

Galea™ Life functions

16-XX

In One by Legrand

XX-XX

Catalogue pages





# Galea™ Life: clear and simple

**Clear contours and colours to suit every décor and lifestyle – that's Galea™ Life in its standard version.**

Frameplates and rockers can be combined at will, enabling your customers to assemble wholly personal variations.

Just five standard rockers form the basis of multiple design variety in this range.



White



Pearl



Titanium



Dark Bronze



Soft Aluminium

# Galea™ Life: solid arguments for your sales pitch



Chrome/Soft Aluminium



Black Nickel/Soft Aluminium



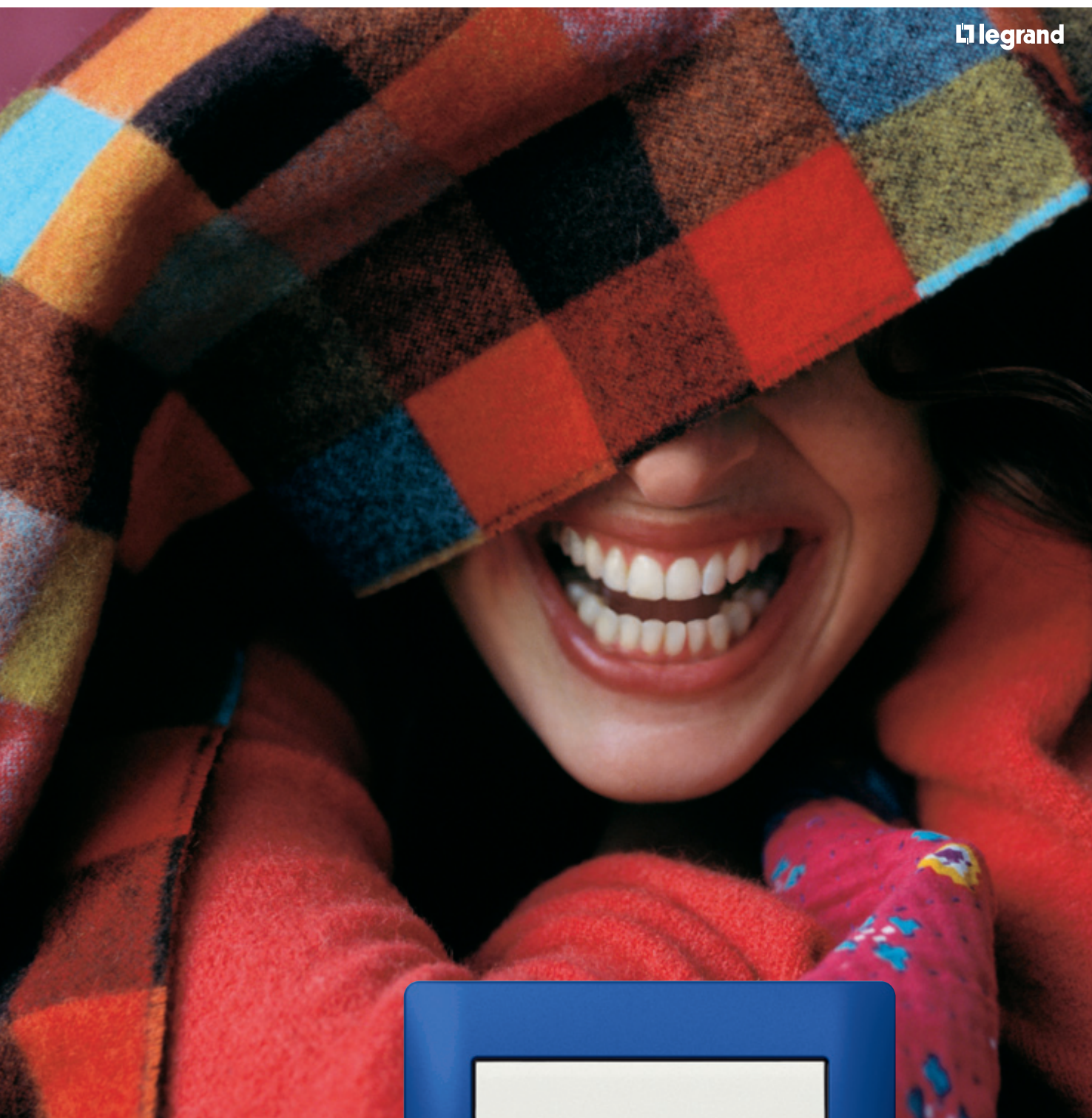
Brushed Aluminium/Soft Aluminium

Solid full metal – radiating a timeless elegance as well as colourful vivacity: these finishes can harmonise with very contrasting preferences in terms of decoration and design.

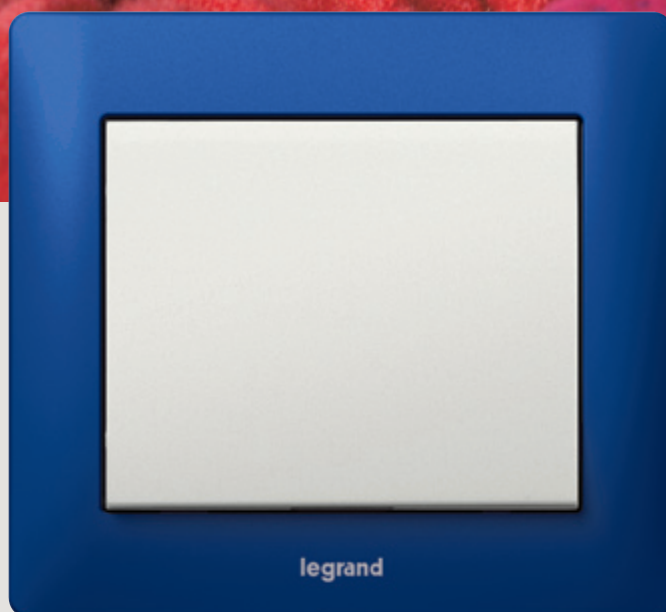


Magic Red/Soft Aluminium





Magic Green/Pearl



Magic Blue/Pearl

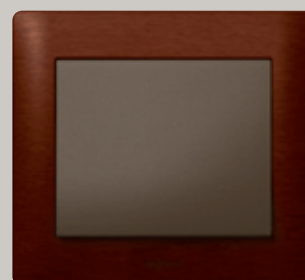


# Galea™ Life: Nature and Techno





Maple/Soft Aluminium



Mahogany/Dark Bronze



Cherry Wood/Titanium

Frameplates made of genuine wood fit into a natural décor, while also offering interesting options for very individual style. Either way you will offer your customers the possibility to make their individual ideas come true.

logy combined

# Galea™ Life:

## The original signature



CORIAN® Cocoa Brown/Dark Bronze

CORIAN® is a renowned material, characterised by its exceptional appearance. Its textures and effects create a signature look. Tailor-made for customers, who value individual design. Frameplates come in two standard versions, while you can also offer your customers eight individual finishes on request.



CORIAN® Everest/Pearl

# look







**Galea™ Life:**  
Just as individual  
as your customers



Leather Club/Dark Bronze



Leather Havana/Pearl

People who are not prepared to compromise on their personal environment, will be prepared to invest in exclusive accessories. These real leather frameplates will allow you to make your most demanding customers an offer they can hardly refuse.

# Galea™ Life:

## Not just pretty – but sm

Galea™ Life combines exceptional design with modern technology. Its comprehensive range of functions is designed to meet the requirements of even your most demanding customers.

### Modern technology in perfect shape



Touch dimmer 400 W,  
all loads



Touch dimmer 600 W  
for incandescent and  
halogen lamps



Automatic switch  
with override  
400 W, 2-wire version  
1000 W, 3-wire version



Illuminated switch



2 pole switch



Rotary dimmer



Shutter control



Thermostat



Access control



Combined socket  
RJ11/45



RJ 45 data socket



TV/RD/SAT socket



# art!

## Sound distribution system: Stand-alone or multi-zone

Stand-alone version for a single room with control unit comprising stereo FM tuner, automatic scan and sound input and loudspeakers.



Control unit

Multi-zone version for sound distribution in stereo quality from one single source into different rooms in the house. Possibility of intercom management and baby monitoring.



Central unit:  
connection of one  
main sound source



Control unit: 2 auxiliary  
inputs and general call.  
Output for 8 or 16  $\Omega$   
loudspeaker



Extension unit:  
FM tuner, intercom,  
baby monitoring

## New functions, new design: Flush mounting IP 44



Double 2-way switch



2P+E socket

## Multiple frames



Frames available up to 5-gang,  
for horizontal and vertical mounting



Discover the new, smart communicating functions  
for greater quality of life...

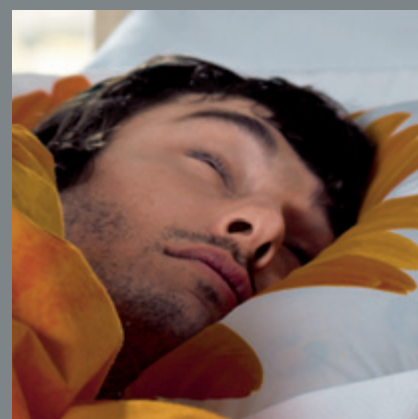


# A new solution to satisfy individual cus

**In One by Legrand** now makes it easy to install tailormade solutions for more comfort, safety and communication. What are your customers' actual desires?



"I want to be able to control the bedroom light when I'm in bed"



"I want the right lighting mood for every situation"



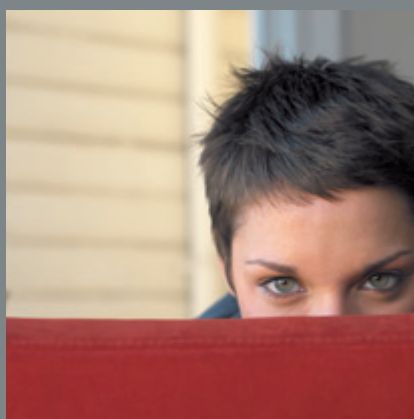
"I want to be able to turn out all the lights and close all the shutters at the press of one button"

"I want to be able to view my digital photos on my living room TV"



# tomor wishes

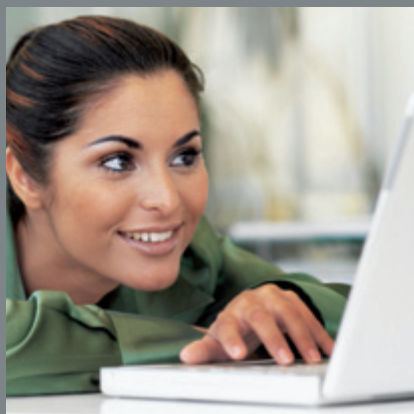
**"I want to lower  
all ground floor  
shutters at  
once using a  
single switch"**



**"I want to  
be warned  
if my  
bathtub  
overflows"**



**"I want to keep  
an eye on my  
home when I'm  
at the office"**



Offer your customers tomorrow's technology without making them feel it's taking over their lives. Install **In One by Legrand** for greater quality of life at the press of a button.





# The flexible answer to your customers' wish

**In One by Legrand** expands the possibilities of electrical installations by providing an interconnection between the various components whose very simplicity is revolutionary.

Signal transmission is done by radio (RF) or Power Line Carrier (PLC), in other words without any extra cabling. And because all components are made able to learn by in-built smart technology, configuring the system is child's play: You just press the buttons on each device.



es

## Advantages:

- Tailor-made solutions that can be installed and used in the familiar way
- Networking of the entire electrical installation without added cables or complex programming
- Applicable anywhere and everywhere without fuss: in new buildings, refurbishment and renovation
- Extendable at any time, to adapt to changing needs and circumstances



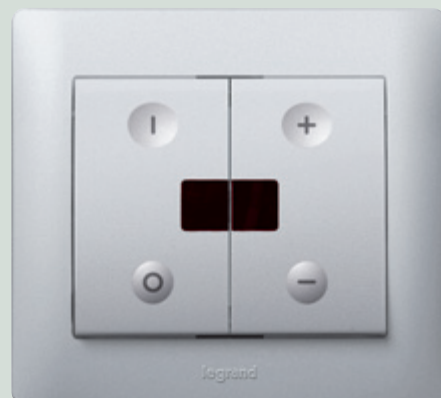
COMMUNICATION

The scenario switch allows to steer all light sources, shutters and awnings in the house equipped with **In One by Legrand** controls.

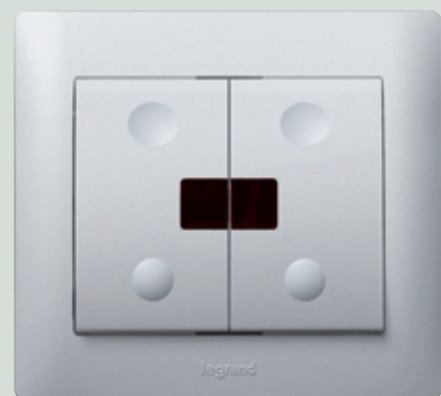
# A little effort brings lots of comfort

It often takes only minor improvements in an electrical installation to provide a good deal of enhanced comfort. But how can this be done with minimum effort?

An extra switch beside the bed to turn off or dim the ceiling light is handy, but laying extra cables is too much work. **In One by Legrand** makes the solution really easy: just replace the existing light switch near the door by a radio dimmer and add a scene-setting switch beside the bed. They will communicate by radio, so no need for wires.



Radio-dimmer:  
replaces the ordinary switch



Radio scene-setting switch:  
fits onto the wall without any wiring



Installation example:  
see p. 36





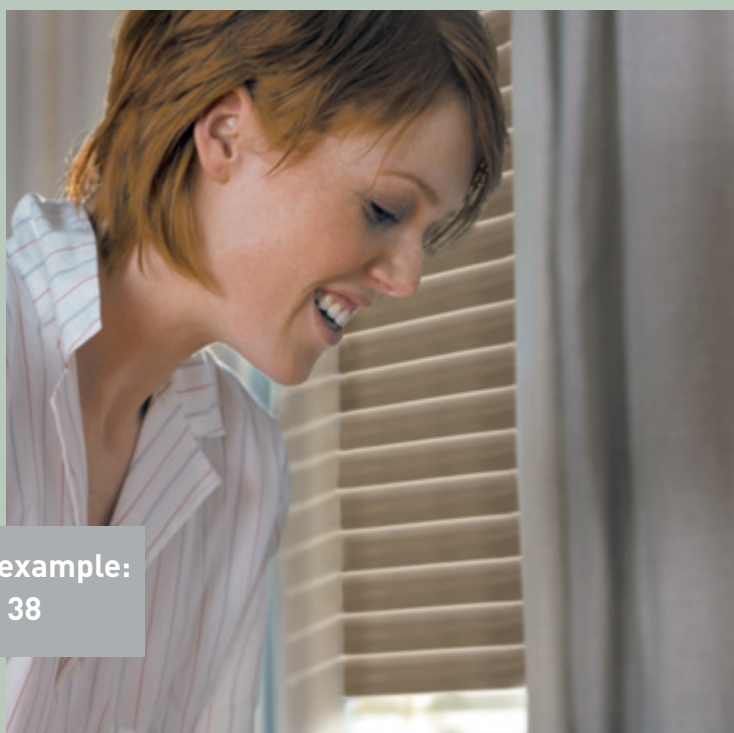
**Local shutter control:**  
can also be included into scenarios

Operating all shutters by pressing a button is no luxury, it just makes life easier. And **In One by Legrand** makes it easy to do.

Whether by radio (RF) or by Power Line Carrier (PLC) if there is a neutral conductor, whether local or group controls – everything is possible, and easy to install. Including retrofit, according to your customers' wishes.



**Group shutter control:** controls several shutters by the press of a button



**Installation example:**  
see p. 38



# Individual lighting scene by just pressing a switch

**Several light sources controlled by a single switch, to produce suitable lighting for every occasion: it's that easy.**

Simple networking of different controls allows to steer several lamps by use of just a single switch. And using the scene-setting switch makes it easy for your customer to set and activate various lighting scenes – bright and sharply focused for craftwork, dimmed for a family dinner, and so much more besides.



**Dimmer with pre-settable lighting level**



**Plug-in dimmable socket – for incorporating floor lamps into lighting scenes**



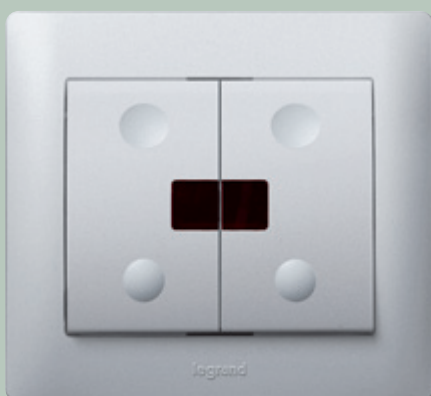
S



**Table-top remote control:**  
switch on up to 6 different  
lighting scenes (IR or RF)



**IR/RF universal multi-  
media remote control**



**Scene-setting switch:** allows to control  
a group of lamps and to set up two  
different lighting scenes

### All switches remotely controllable

Remote controls make lighting control even more comfortable. The universal multimedia remote control allows to control different home entertainment devices as well.



**IR remote control:**  
also suitable for TV

Dimmers too can be controlled according to individually pre-set levels of lighting. For an evening playing games in the living room, for example, the ceiling lamp could be gently dimmed while a floor lamp discreetly ensures indirect lighting.

**Installation example:**  
see p. 40







# The entire house at your fingertips

Maximum networking for maximum comfort.

Just one touch for:

- Light in the hallway
- Open shutters on the ground floor
- Lamps switched on in the living room
- ...



Scenario switch

At your customers' request, **In One by Legrand** lets you provide them with a fully networked home, setting their imagination completely free: from the entrance door, at a single press of a switch, they can light up the hallway, raise the shutters throughout the ground floor and turn on the light in the living room. And when leaving, it's equally easy to turn off all the lamps in the house, bring down the shutters and withdraw awnings.



Switches



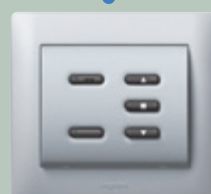
Dimmers



Automatic switches



Plug-in sockets



Local shutter/awnings control

# Safety for improved quality of life

**It's quite simple to install detectors for technical failures. There are three different kinds with visual and acoustic alarm functions on offer.**

## Keeping watch

Even when noone's at home, the system keeps watch and alerts the owner by mobile phone in the event of any incident. What is more, the flood and gas detectors allow to cut off water or gas supply by triggering an electrovalve.



**Flood detector:**  
limits the damage.



**Gas detector:** gives warning  
before things get critical.



**Smoke detector:**  
warns occupants in the  
event of fire.







Configure a scenario switch...



...or a table-top remote control,  
for even greater flexibility

## Don't panic!

Suspicious noises outside?  
A switch by the bedside allowing  
to turn on the light throughout  
the house and to open all shut-  
ters at once will be reassuring.  
This "panic scenario" can be  
configured quite easily by the  
use of a scenario switch or a  
table-top remote control.





# Flexible communication no matter where you are.

Communication, information and entertainment are increasingly coming together. **In One by Legrand** now makes it quite easy to network different applications, thus offering your customers maximum flexibility.

## Network TV, internet, telephone, computers, fax...

Your customers want the TV, internet and telephone to be available in every room of the house? They want to share data, the internet access or different devices? They want to be free to connect their TV or telephone anywhere in the house?

## Flexibility through networked communications

Offer your customers maximum flexibility by setting up a home network meeting their special needs.

### Two solutions are on offer:

The universal solution using only one unique RJ45 socket for TV, telephone and internet applications. And the conventional solution, combining a coaxial TV network with an RJ45 voice and data network. In both cases one central communication cabinet concentrates all incoming signals and distributes communication services all over the house.

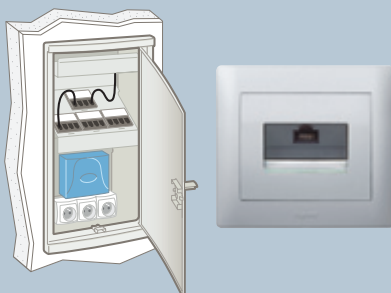


Watching holiday photos from your PC on the living room TV? Just one of the possibilities offered by a home network.

# and control



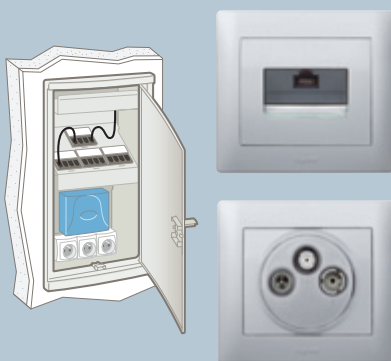
## Universal solution



One unique socket for access to TV, telephone or internet – RJ45



## Conventional solution



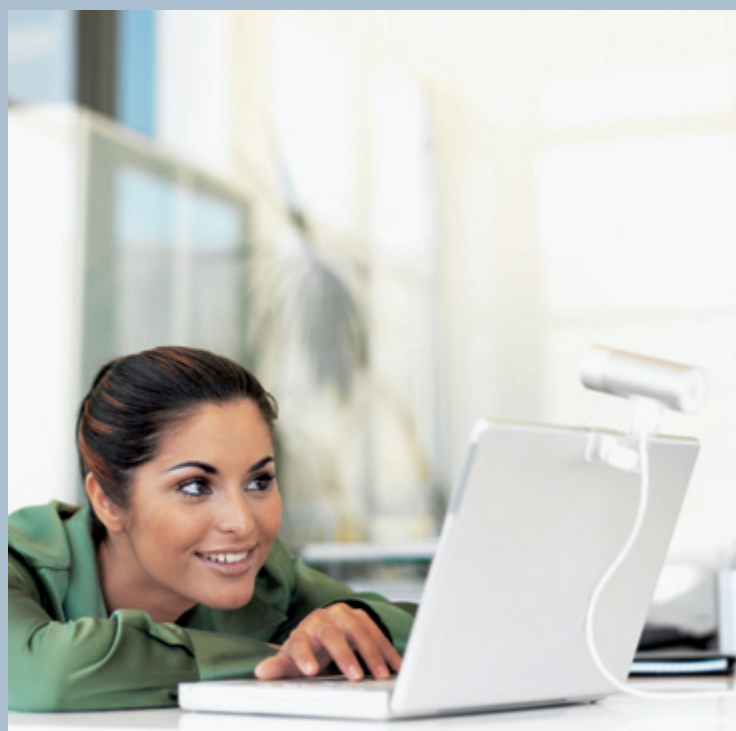
Two dedicated sockets – RJ45 for telephone and data, TV/RD/SAT for TV



Omizzy web server – for remote surveillance and control.

## A connection to the outside world

Give your customers the reassuring feeling of being able to keep an eye on things any time, anywhere. Using the Omizzy web server and surveillance cameras both in and around the house, they stay in the picture from any internet access point or mobile. And even without cameras they can check the state of lights and shutters and change it if necessary.





# Intelligent solutions, quite simple to install

**In One by Legrand** operates with transmitters that emit a control signal, and receivers that trigger the actual control process.

## Two basic elements

The possible combination of both functions in a single device allows even complex networking to be made quite easy. Transmitters can be switches, dimmers, remote

controls or scenario switches, which command several receivers at once. Receivers can be switches or dimmers, but also roller shutter and awnings controls or plug-in sockets.



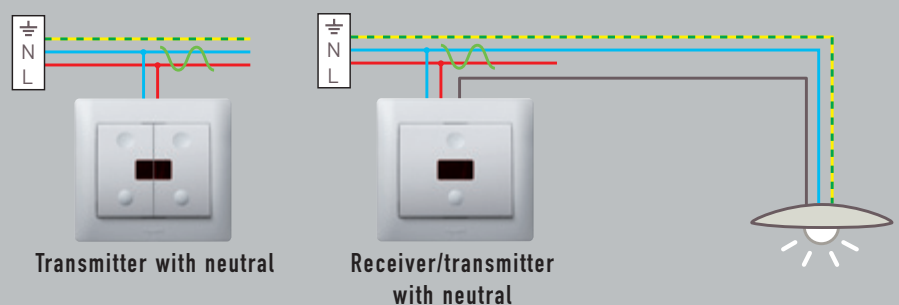
Transmitter  
(e.g. scenario switch)      Receiver  
(e.g. radio switch)

## Signal transmission via neutral conductor or radio

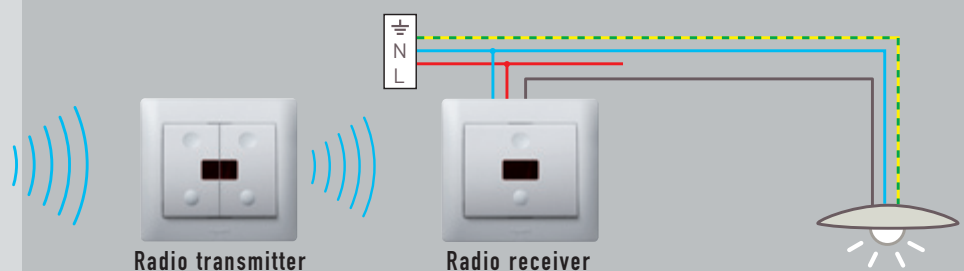
Signal transmission can be either via the neutral conductor, according to the principle of Power Line Carrier (PLC), or wireless using radio frequency (868,3 MHz). These two processes can also combine quite simply using an interface. The installation effort is thus reduced to a minimum, as ordinary power lines are enough and no special wiring is needed.



### The principle of Power Line Carrier (PLC) installation



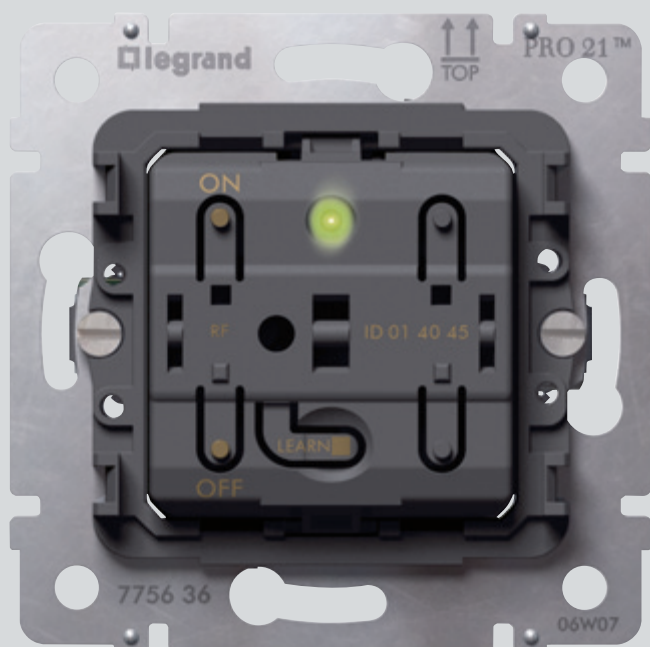
### The principle of radio frequency (RF) installation





## Intelligence on board

All components have built-in intelligence. That's why just a few presses of a button are enough to network them and let them learn even complex programs.



## Advantages:

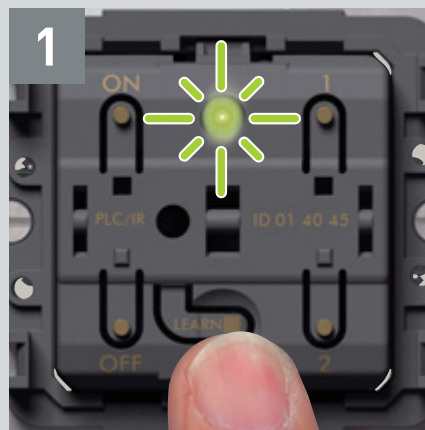
- Network the entire installation without extra wiring
- Use existing conventional infrastructure or radio
- Easy combination of PLC and radio (RF) components

# Configuration: Smart keys

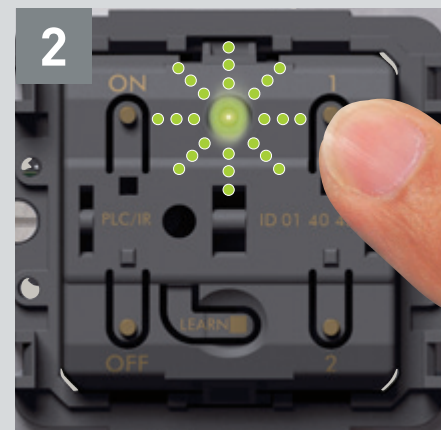
All devices learn how to work together at the press of a key.  
They all work to the same "push & learn" principle – learn once, repeat indefinitely.

No software needed,  
no PC, no program-  
ming skills – This is  
all you need to do:

## Transmitter



Activate "LEARN" mode by  
pressing the "LEARN" key  
on the transmitter

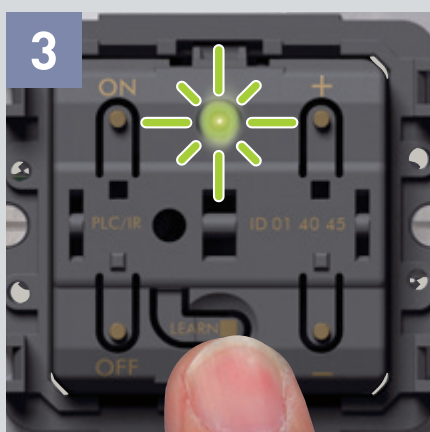


Still on the transmitter,  
press the command key that  
is to control the scenario

## Push & Learn – as often as you want

To connect more than one receiver to a transmitter, repeat steps 3 and 4 for each receiver before saving the scenario on the transmitter. For example this will allow a scenario switch by the entrance to control both the hall and living room lighting and the ground floor roller shutters, all at once.

## Receiver

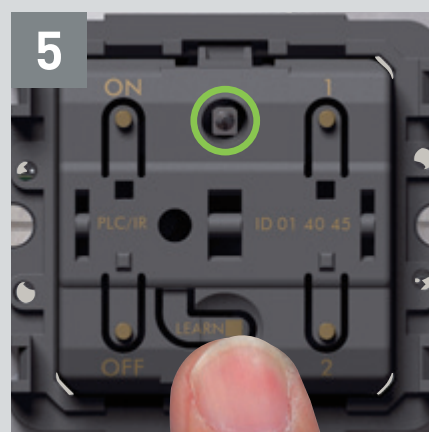


Then activate "LEARN" mode by pressing the "LEARN" key on the receiver you wish to add



Still on the receiver, press the command key that is to be associated with the transmitter

## Transmitter



Finally, save the scenario by pressing "LEARN" on the transmitter

## Configuration is child's play

The "push & learn" principle is so simple that your customers can easily do it themselves, once you've shown them how. This takes away the fear of complicated technology and makes **In One by Legrand** part of everyday life.



# Extend or change at any time

Because **In One by Legrand** installations can be changed and extended at any time, a wealth of opportunities open up for you to build lasting customer loyalty.

## Planning ahead when building

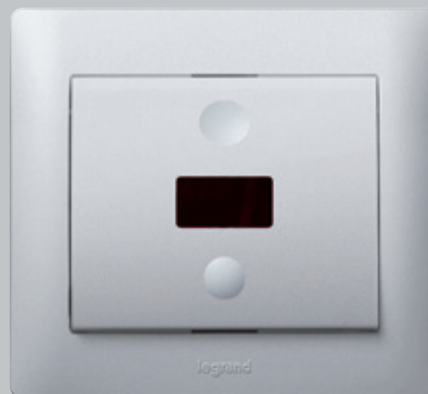
When dealing with new building projects or wide-ranging refurbishments, you should recommend a future-oriented installation. This means equipping all control points with a neutral conductor and ensuring any roller shutters and awnings can be electrically powered.

## Step-by-step extension

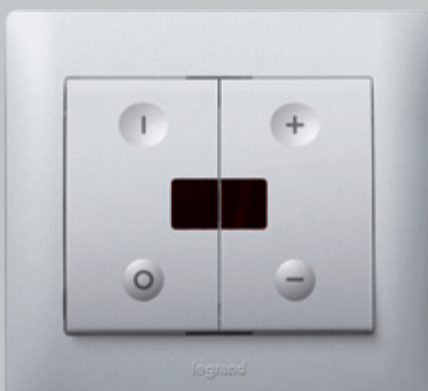
Extension by fitting of individually chosen **In One by Legrand** components can then be done step by step – when your customers, having built their house, regain some financial leeway, when their desire for comfort and safety increase, or when a major change occurs in their life.

## Innovative renovation without much ado

There are interesting sales opportunities to be made in the retrofit market: Even when there's no neutral conductor, you can use radio components to install innovative functions for greater quality of life without any cable laying or other major work.



Radio switch: the ideal solution when there's no neutral conductor



More comfort through use of dimmers



Easy upgrading at any time,  
e.g. a central shutter control



Add or change scenarios easily:  
scenario switch





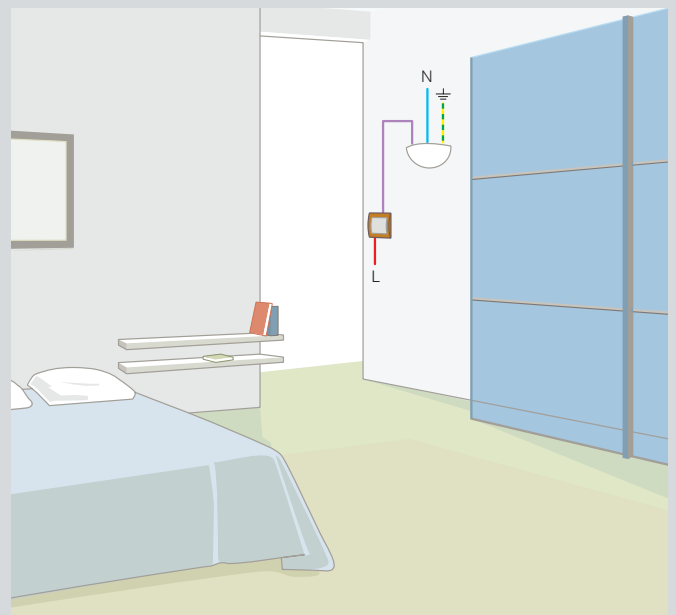


# Individual customer sol Upgrading made easy

Just how easy **In One by Legrand** makes it to install tailored solutions for greater quality of life, is shown in the following examples.

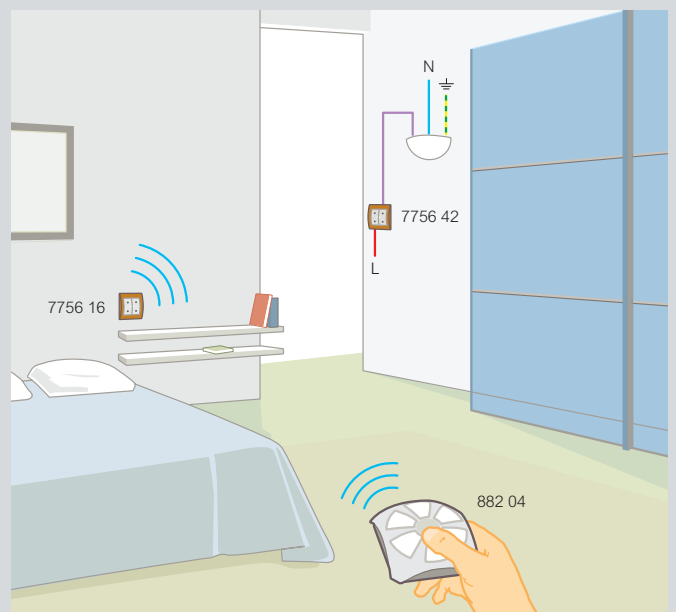
## CUSTOMER WISH:

"I want to be able to control my bedroom ceiling lamp when I'm in bed. But no dirty and inconvenient plaster-work, please!"



## YOUR ANSWER:

No problem: just use the **In One by Legrand** wireless solution.



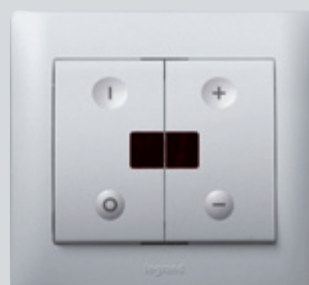
# utions

## IT'S THIS EASY:

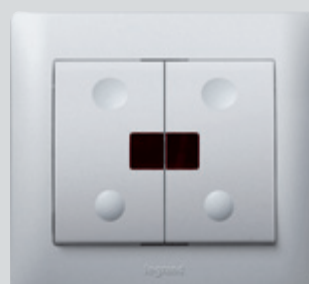
You just replace the ordinary switch near the door by a radio dimmer – using the existing two wires. No neutral conductor needed! On top of this, you place a radio scene-setting switch onto the wall beside the bed – without any wires. Just configure, and you are ready to go!

### Advantages:

- Minimal effort without extra wiring
- No dirty and inconvenient plasterwork
- Extendable at any time, e.g. with a remote control



Radio dimmer  
7756 42



Wireless scene-setting switch  
7756 16



Radio remote control  
882 04

# Individual customer solution Shutter control

## CUSTOMER WISH:

**"I want to have electrical shutters in my new house. I want to control them individually or all at once from one single point."**



Local shutter control  
7756 22

## IT'S THIS EASY:

Fit a local shutter control near each window. Install a group shutter control (neutral conductor and live needed) and configure it.



Group shutter control  
7756 25



IR remote control:  
882 00



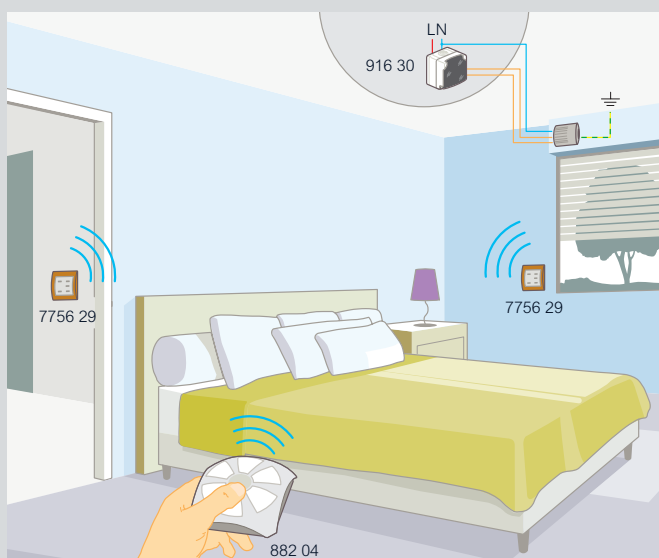
**Shutter control in a new building  
(PLC Solution)**

## Advantages:

- Easy installation
- Shutters can be integrated into different scenarios
- Possibility of remote control



# utions



## Modernise manually operated shutters (radio (RF) solution)

### Advantages:

- Modernisation with minimal plasterwork
- No additional wiring needed for the group control
- Shutters can be integrated into different scenarios
- Possibility of remote control



Weatherproof local shutter control  
916 30



RF group shutter control  
7756 29



Table-top remote control  
882 04

### CUSTOMER WISH:

"I want to achieve electrical control of my shutters and operate them all from one single point."

### IT'S THIS EASY:

The weatherproof local shutter control can be fitted near the motor of the roller shutter. The wireless group shutter control can be placed anywhere on the wall. Just configure – and that's it!

# Individual lighting scen

## Easily achieved

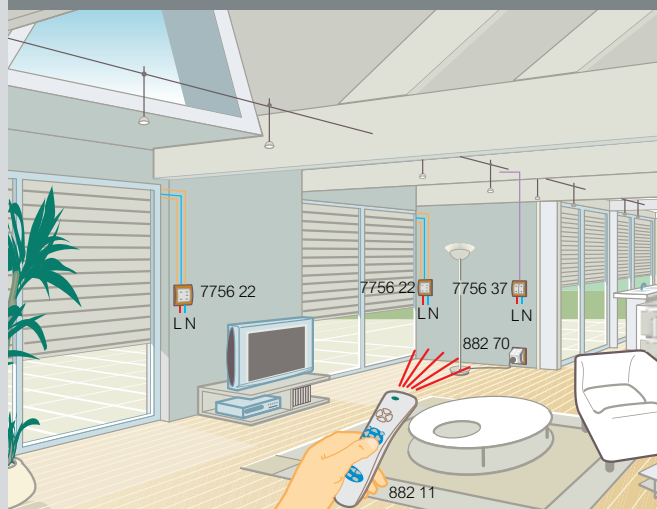
### CUSTOMER WISH:

"I want to be able to set the right lighting scene for every occasion from the couch in my living room – with just one touch. For example, for a cosy evening watching TV, I want to turn off the ceiling light, turn on the floor lamp in the corner at a gently dimmed level and lower all shutters in the room."

### Advantages:

- Conventional installation with no dedicated wiring
- Suitable for all types of load
- Flexible comfort for your customer, adaptable at any time
- Possibility of remote surveillance and control via the Omizzy web server

### Your answer for a new building:



PLC/IR solution

### PRODUCTS



Dimmer

PLC Installation  
Radio Installation

7756 37  
7756 42



Shutter Control

7756 22  
7556 27



Plug-in dimmable socket

882 70  
882 72



Scenario switch

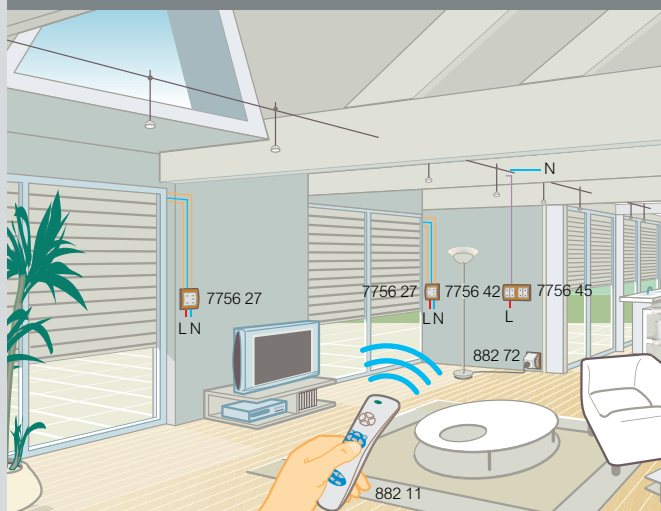
-  
7756 45

# es

## IT'S THIS EASY:

For the ceiling lamp you fit an **In One by Legrand** dimmer. Each shutter is equipped with a local control. The floor lamp is controlled by a plug-in dimmable switched socket. Lighting scenarios can be set up and steered by remote control or a scenario switch (radio installation).

### Your answer for retrofit:



Radio (RF) solution

### Advantages:

- Easy installation without dirty and inconvenient plasterwork
- Control points can be integrated at will
- Flexible comfort that your customer can adapt at any time



RF/IR Universal Remote Control

882 11

882 11



LEGRAND XXX

Haec disserens qua de re agatur et in quo causa consistat non videt. Non enim si ali ad alia propensiores sunt propter causas naturales et antecedentes, idcirco etiam nostrarum